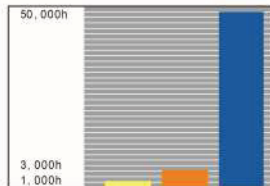




500ELED

500ELED

Optional color temperature, there are three color temperature section, respectively is 3800 k, 4400 k, 5000 k. color temperature can be adjusted. First, the color temperature adjustable benefits is to reduce the doctor eyes visual fatigue. Second, according to the different color of skin, choose the right color temperature.



Long service life:
Halogen generally is 1000 hours, the LED is the (Osram) more than 50000 hours.

Main Technical Data

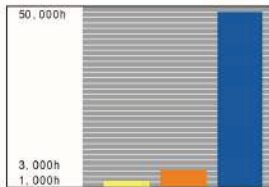
500ELED	Adjust Color Temperature
Illuminance	≥140,000Lux
Colour temperature	3800±500K 4400±500K 5000±500K
Colour reduction index(Ra)	95
Total irradiance	390W/ m ²
Size of light field	160~280mm
Service life of illuminant	50,000h
Power supply voltage	AC110-240V 50/60Hz
Total power consumptio	60W
Total LED bulb quantity	72 pcs (12*6)
Illuminance depth	≥1300mm
Emergency time	7 hours
Brightness adjustment	Automatic8-stage continuous light adjustment



500S LED lamp with pendant and examination lamp

500SLED

Optional color temperature, there are three color temperature section, respectively is 3800 k, 4400 k, 5000 k. color temperature can be adjusted. First, the color temperature adjustable benefits is to reduce the doctor eyes visual fatigue. Second, according to the different color of skin, choose the right color temperature.



Long service life:
Halogen generally is 1000 hours,
the LED is the (Osram) more than 50000 hours.

Main Technical Data

500SLED	Adjust Color Temperature
illuminance	≥140,000Lux
Colour temperature	3800±500K 4400±500K 5000±500K
Colour reduction index(Ra)	95
Total irradiance	390W/m ²
Size of light field	160-280mm
Service life of illuminant	50,000h
Power supply voltage	AC110-240V 50/60Hz
Total power consumptio	60W
Total LED bulb quantity	72 pcs (12*6)
illuminance depth	≥1300mm
LED bulb	3.3mW/m ² lx

Configuration

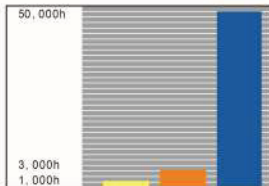
- * 4 Gas socket(2 x oxygen, 2 x air and 1 x vac);
- * 6 Multi-purpose power socket; * 1 Communication Socket RJ45
- * 3 Shelf(400*510mm) * 1 Drawer *1 Examination Lamp



500SLED

500SLED

Optional color temperature, there are three color temperature section, respectively is 3800 k, 4400 k, 5000 k. color temperature can be adjusted. First, the color temperature adjustable benefits is to reduce the doctor eyes visual fatigue. Second, according to the different color of skin, choose the right color temperature.



Long service life:
Halogen generally is 1000 hours,
the LED is the (Osram) more than 50000 hours.

Main Technical Data

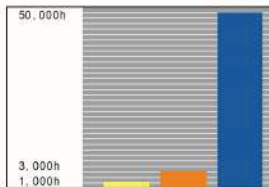
500SLED	Adjust Color Temperature
Illuminance	≥140,000Lux
Colour temperature	3800±500K 4400±500K 5000±500K
Colour reduction index(Ra)	95
Total irradiance	390W/m ²
Size of light field	160~280mm
Service life of illuminant	50,000h
Power supply voltage	AC110-240V 50/60Hz
Total power consumptio	60W
Total LED bulb quantity	72 pcs (12*6)
Illuminance depth	≥1300mm
LED bulb	3.3mW/m ² lx



500S LED lamp with pendant and examination lamp

500SLED

Optional color temperature, there are three color temperature section, respectively is 3800 k, 4400 k, 5000 k. color temperature can be adjusted. First, the color temperature adjustable benefits is to reduce the doctor eyes visual fatigue. Second, according to the different color of skin, choose the right color temperature.



Long service life:
Halogen generally is 1000 hours,
the LED is the (Osram) more than 50000 hours.

Main Technical Data

500SLED	Adjust Color Temperature
Illuminance	≥140,000Lux
Colour temperature	3800±500K 4400±500K 5000±500K
Colour reduction index(Ra)	95
Total irradiance	390W/m ²
Size of light field	160-280mm
Service life of illuminant	50,000h
Power supply voltage	AC110-240V 50/60Hz
Total power consumptio	60W
Total LED bulb quantity	72 pcs (12*6)
Illuminance depth	≥1300mm
LED bulb	3.3mW/m ² lx

Configuration

* 4 Gas socket(2 x oxygen, 2 x air and 1 x vac);

* 6 Multi-purpose power socket; * 1 Communication Socket RJ45

* 3 Shelf(400*510mm) * 1 Drawer *1 Examination Lamp