

Sigma Elite Chamber System

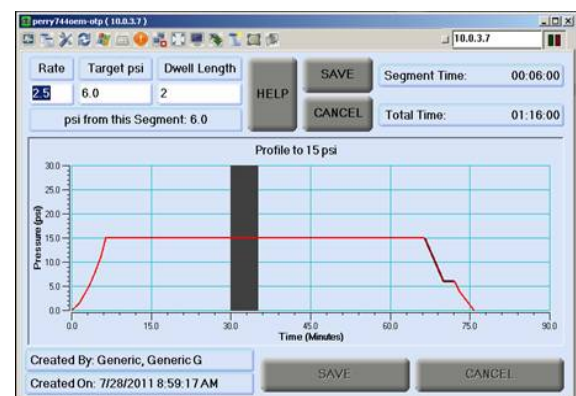
- All chambers on system share common database
- Patient monitoring and support from one location
- Patient and treatment review software allows filtering information of interest from all chambers at once

Sigma Elite Features

- Optional accessories available to meet clinical needs
- Upgrade available with an undercarriage gurney system
- Electronic Medical Record (EMR) software can be added to the Sigma Elite Chamber System to interface with facility

Sigma Elite Chamber is Electronically Controlled

- Operator control panel is the interface to the electronic controller
- Touch screen allows creation and selection of patients and reports
- Treatments can be run manually or automatically
- Automated treatments include full pressure profile and air brake locations
- Profiles can include non-linear curves to avoid ear trauma, contain multiple dwell pressures and include air brake





Sigma Elite

Monoplace Hyperbaric System

Sigma Elite Standard Features

- Automatic Control/Manual Control
- Pneumatic Backup Control System
- Analog Manual Set Point & Rate Set
- Electronic Record and Hard Copy of Treatment
- Programmable Air Break Alerts
- Preloaded with Standard Treatment Profiles
- Touch Screen Interface
- Windows XPE Embedded Operating System
- Auxiliary Audio Input
- Two-Way Communication with UPS Backup
- Right and Left Hand Configurations
- Patient Monitoring & Support Interfaces
- Non-Invasive Blood Pressure Capability
- Electronic Connections Compatible with ECG, Patient Body Temperature, Heart Rate and TCPO2
- Respiratory Support Capability
- Suitable for Pressurization with Air or Oxygen



Electronic Medical Record (EMR) Sigma Elite Chamber System

Highest Level of Reliability & Safety

- External control module allows for discreet handset or speaker to monitor patient's voice communication. Backup power source allows for safe, uninterrupted communication in the event of a power outage.
- Pneumatic control panel to insure safe operation of the system even in the event of power failure
- Extra wide Stryker® Gurney which locks to chamber for patient comfort and safety

The Perry Sigma Elite Monoplace Chamber Family



| Specifications | Sigma 34 | Sigma 36 | Sigma 40 |
|-------------------------------|-----------------------------------|-----------------------------------|-----------------------------------|
| Width | 40 in. / 1.016 m | 42 in. / 1.067 m | 46 in. / 1.168 m |
| Length | 112 in. / 2.845 m | 113.25 in. / 2.877m | 113.25 in. / 2.877 m |
| Height | 61 in. / 1.549 m | 64 in. / 1.626 m | 68.75 in. / 1.746 m |
| Internal Diameter | 33.5 in. / .851 m | 36 in. / .914 m | 40.5 in. / 1.029 m |
| Internal Length | 92 in. / 2.337 m | 93 in. / 2.362 m | 93 in. / 2.362 m |
| Internal Volume | 47.2 cu. ft / 1.337 cu. m | 54.8 cu. ft. / 1.551 cu. m | 69.3 cu. ft. / 1.962 cu. m |
| Weight | 2200 lbs. / 998 Kg | 2400 lbs. / 1088 Kg | 2850 lbs. / 1293 Kg |
| Max Op. Pressure | 30 psig (66 FSW) 2.07 bar (3 ATA) | 30 psig (66 FSW) 2.07 bar (3 ATA) | 30 psig (66 FSW) 2.07 bar (3 ATA) |
| Design Temperature | 32° to 100°F / 0° to 38° C | 32° to 100°F / 0° to 38° C | 32° to 100°F / 0° to 38° C |
| O2 Supply Pressure | 50 to 90 psig / 3.45 to 6.2 bar | 50 to 90 psig / 3.45 to 6.2 bar | 50 to 90 psig / 3.45 to 6.2 bar |
| O2 Supply Peak Flow | 30 scfm / 850 lpm | 40 scfm / 1130 lpm | 40 scfm / 1130 lpm |
| Ventilation Rate | 4.4 - 13.6 scfm / 125 - 385 lpm | 4.4 - 13.6 scfm / 125 - 385 lpm | 4.4 - 13.6 scfm / 125 - 385 lpm |
| Pressure Change Rate | 1 - 5 psi/min / .07 - .34 Bar/min | 1 - 5 psi/min / .07 - .34 Bar/min | 1 - 5 psi/min / .07 - .34 Bar/min |
| Emergency Depress Rate | 3 ATA to 1 ATA in 100 sec. | 3 ATA to 1 ATA in 120 sec. | 3 ATA to 1 ATA in 120 sec. |



3750 Prospect Ave, Riviera Beach, Florida 33404 USA
 Phone: 561-840-0395 | Toll Free: 800-741-4376 | Fax: 561-840-0398
www.perrybaromedical.com | info@perryhbo.com

MKT-904518 Rev A