



#### Knee Arthroscopy Surgery

Recommended accessories:

- 230000760 Donut head gel pad x1
- 230000769 Torso section gel pad x1
- 121000294 Arm rest x2
- 121000532 Knee support



#### Rectal Surgery

Recommended Accessories

- 121000294 Arm rest x2
- 121000347 Foot plate 1pair
- 121000348 Notched clamp x2
- 121000355 Iliac support x1



#### Orthopedic Procedures

Recommended Accessories:

- 230000760 Donut head gel pad x1
- 230000769 Torso section gel pad x1
- 121000358 Orthopedics traction x1



#### Chest/Abdominal Surgery

Recommended Accessories

- 230000760 Donut head gel pad x1
- 230000769 Torso Section gel pad x1
- 121000294 Arm rest x1
- 121000349 High position arm holder x1
- 230000766 Universal dome shaped pad x1



## Aegistab OP850 Electronic Operating Table



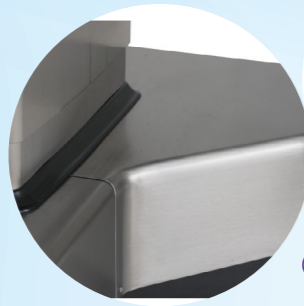
**AEOMED**  
Reliable Quality Thoughtful Service

HQ: 11B2, Fengtai Science Park, Beijing, China (100070)  
Science Park: No. 10, Chaobai Street, Yanjiao Development Zone, Sanhe City, Hebei Province, China (065201)  
TEL: +86-10-5841 1198 FAX: +86-10-6371 8989  
Http://www.aeonmed.com E-mail: marketing@aeonmed.com

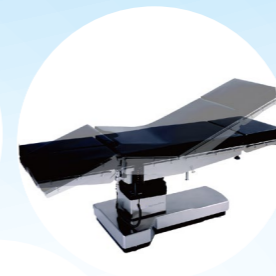
The information contained in this leaflet is correct at the date of publication. The policy of Beijing Aeonmed Co., Ltd. is one of the continued improvement to its products. Because of this policy, Aeonmed reserves the right to make any change, which may affect the information in this leaflet without giving prior notices.  
AOP850-1708

**AEOMED**  
Reliable Quality Thoughtful Service

A high and multi-performance electronic operating table with maximum weight capacity of 297kg, meeting requirements for different surgeries.



- ① Premium Quality Material**
- All exposed parts are made from stainless steel SUS304
  - Easy to clean and disinfect
  - All control parts are imported



- ⑤ Surgical Configuration**
- Has one-key reset flex and reflex function
  - Table angles and section lengths can be adjusted within a wide range with 6 standard and 13 optional accessories



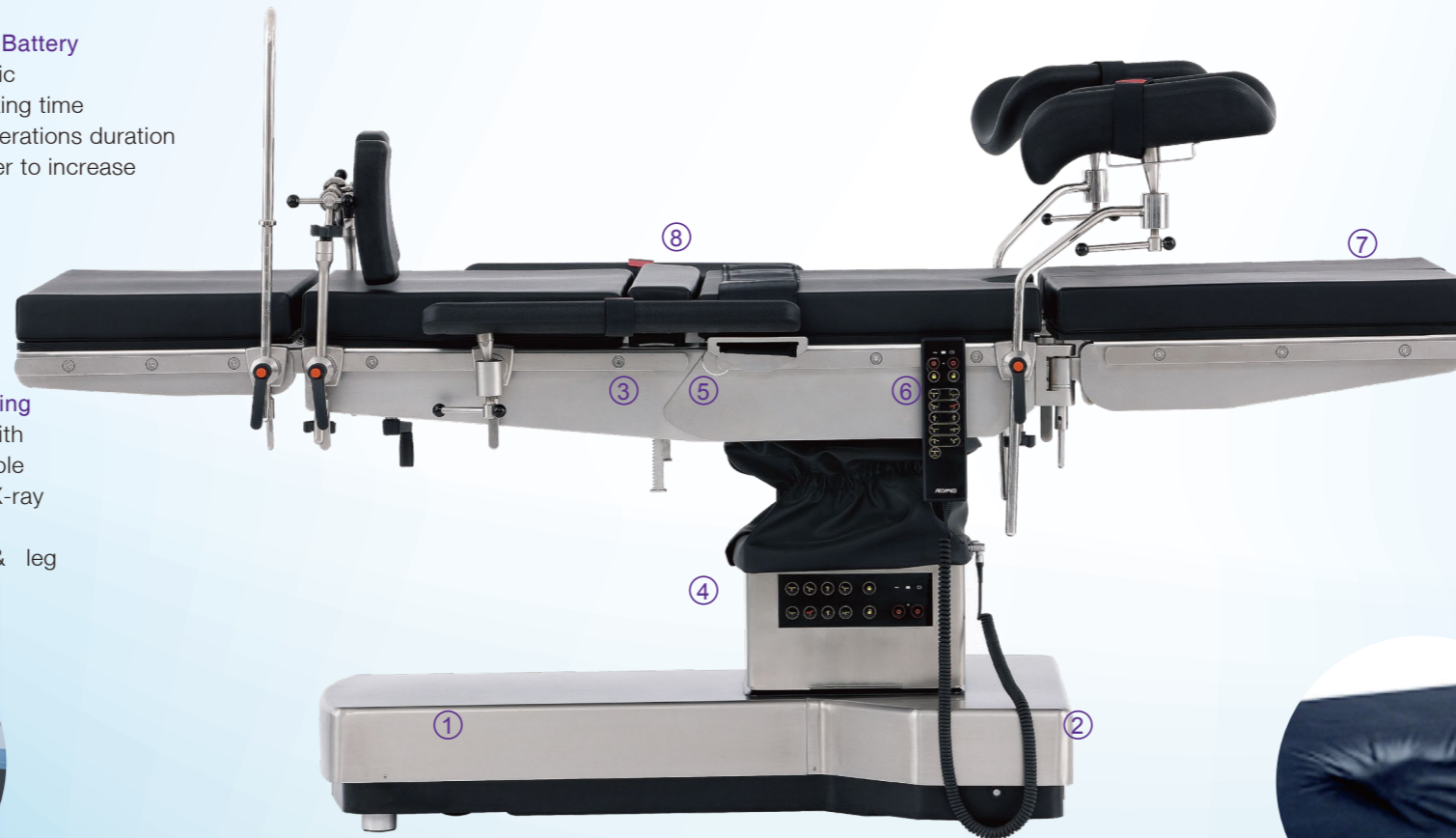
- ② High Efficiency Built-in Battery**
- Imported from Panasonic
  - Maximum 15 days working time
  - Maximum 85 normal operations duration
  - No request for AC power to increase the safety of surgery



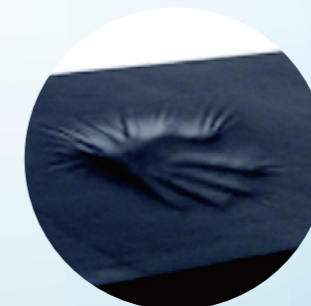
- ③ Perfect for X-Ray Imaging**
- Head and leg section with excellent radiolucent table guarantee high quality X-ray imaging
  - Exchangeable head & leg section



- ④ Ergonomic Adjustment**
- Convenient design for wrench of leg plate and head plate, able to control leg and head plates single-handedly
  - Imported gas springs guarantee smooth movement
  - Imported round-hole clamps enable easy lock and unlock accessories, ensuring safety during operation
  - Adjustable table height (700-1100mm) and T-shape base provides comfortable working environment



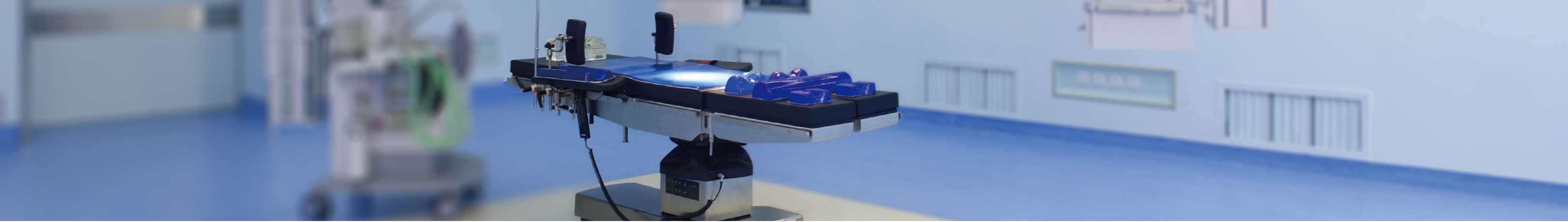
- ⑥ Safety**
- Auto-lock system: table base will be locked automatically once the position adjusted by controller, preventing possible misoperation
  - Two control modes: manual and column control panel, allowing for backup if one is broken, ensuring the safety of surgery
  - Control panel will power off automatically when there is no operation over 1 minute, avoiding any possible misoperation



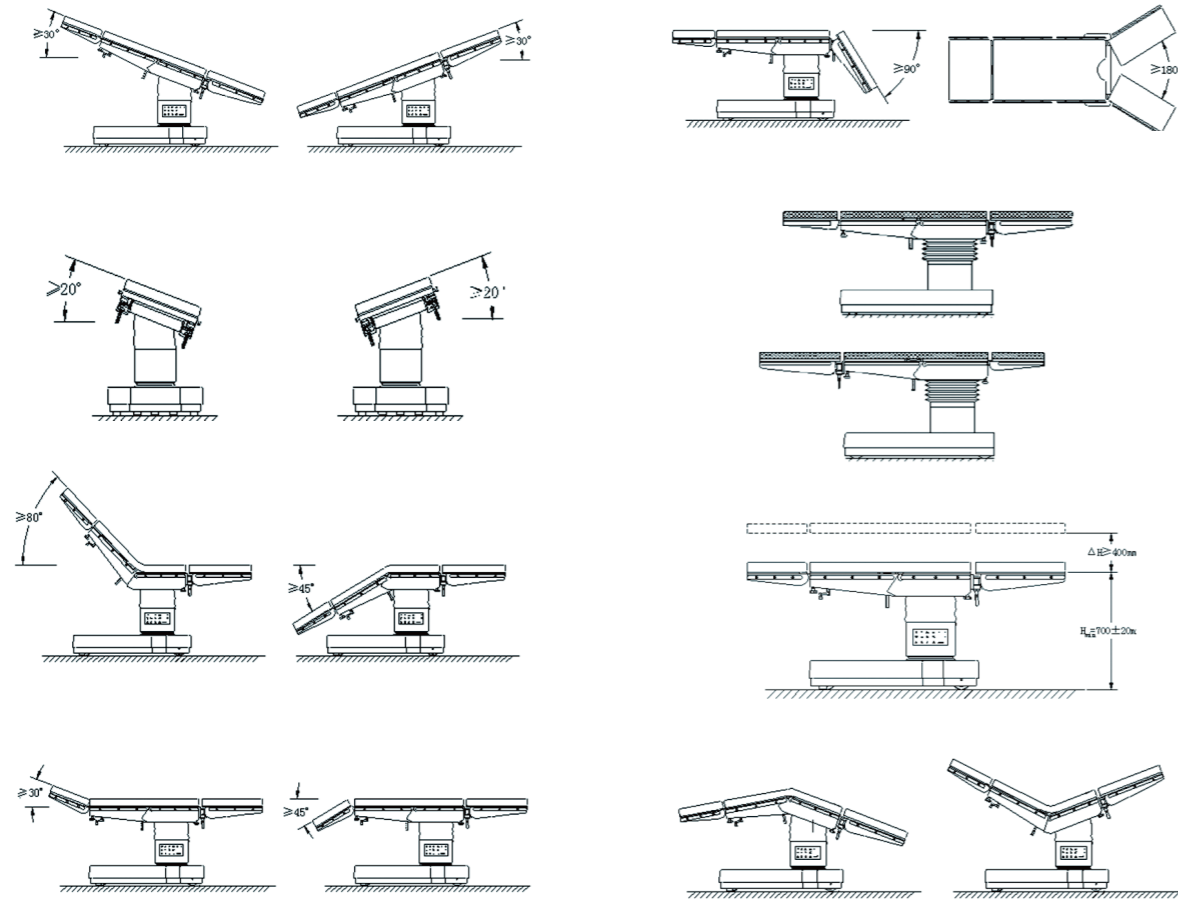
- ⑦ Pads**
- Have soft texture and stuffed with memory foam
  - Ultrasonic bonded and sealed for easy disinfection and sterilization
  - Effectively reduce possibility of patient bedsores



- ⑧ Built-in Elevator Kidney-bridge**
- Has no negative effect on X-ray transparency and able to support kidney and gall bladder surgeries efficiently



Wide adjustment range for all positions, satisfying the requirements for different surgeries.



#### Technical Specifications

OP850 is a high quality hydroelectric operating table which satisfies European clinical safety requirements for convenient and flexible operation system. It will be your best choice for modern operation room.

Table Length(mm)	2,020
Table Width(without side rails)(mm)	520
Table Height(without pads)(mm)	700 to 1,100
Trendelenburg / Reverse	30°/30°
Lateral Tilt (left/right)	20°/20°
Back Plate Up/Down	80°/45°
Head Plate Up/Down	30°/45°
Leg Plates Down	90°
Leg Plates Split(°)	180
Flex/Reflex(°)	240 / 120
Kidney -bridge Elevator Up(mm)	128
Power Input(Hz)	AC 90V-264V 50/60
Cell Output(AH)	DC 24V 12
Weight Capacity(kg)	300

#### Optional Accessories

##### Features :

All table accessories are made of SUS304 stainless steel. All the surfaces are easy to clean and disinfect. With 6 standard and 13 optional accessories, the surgical bed can support a multitude of body positions and procedures, meeting the requirements of most surgeries.



121000347/121000348  
Foot plate (notched clamp)



121000349/  
High position arm holder



121000351/  
Connection bracket



\* 121000350/121000351  
Head rest(connection bracket)



121000352/121000351  
Head plate(connection bracket)



121000353/  
Hand operating table



121000354/  
Instrument Tray



121000355/  
Iliac support



121000356/  
Intervertebral pad



121000357/  
Drainage bowl



\* 121000358/  
Orthopedics traction

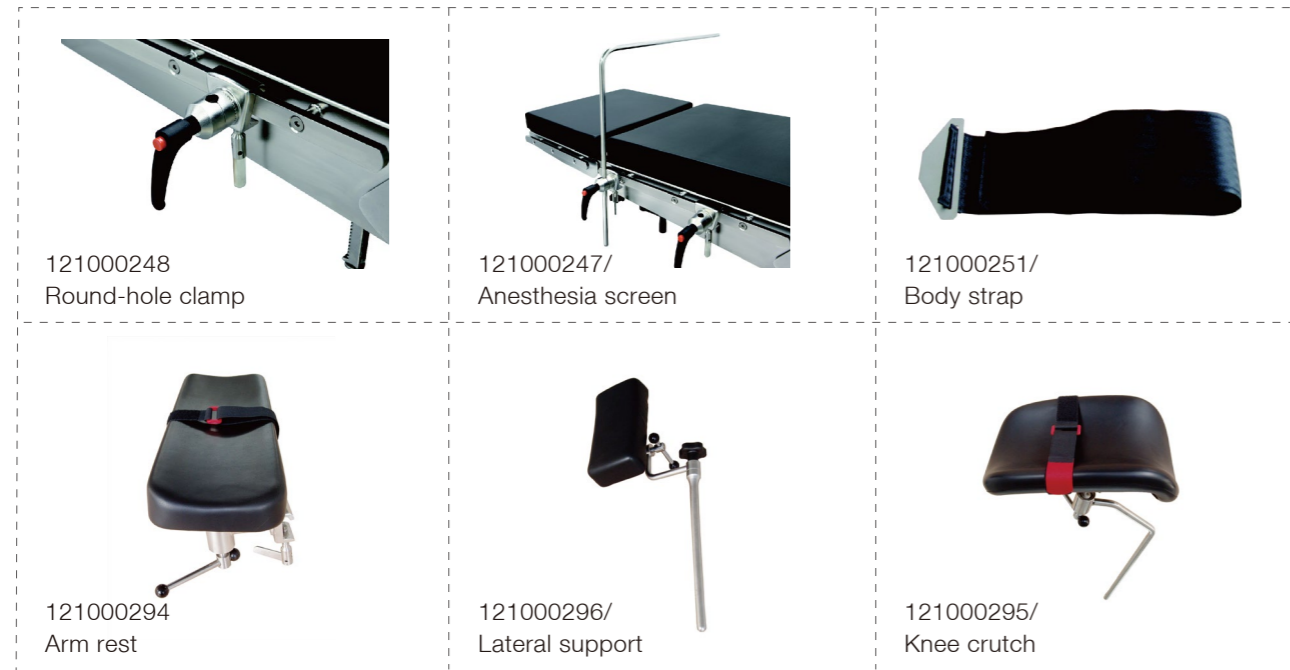


121000360/  
Infusion frame

#### Orthopedics Features

The orthopedics traction is designed based on EU's requirements, meeting the requirements of most orthopedics surgeries. All table parts are made of SUS304 stainless steel with high strength. Therefore, the surgical table is very stable during surgeries and it is also X-ray and C-arm translucent.

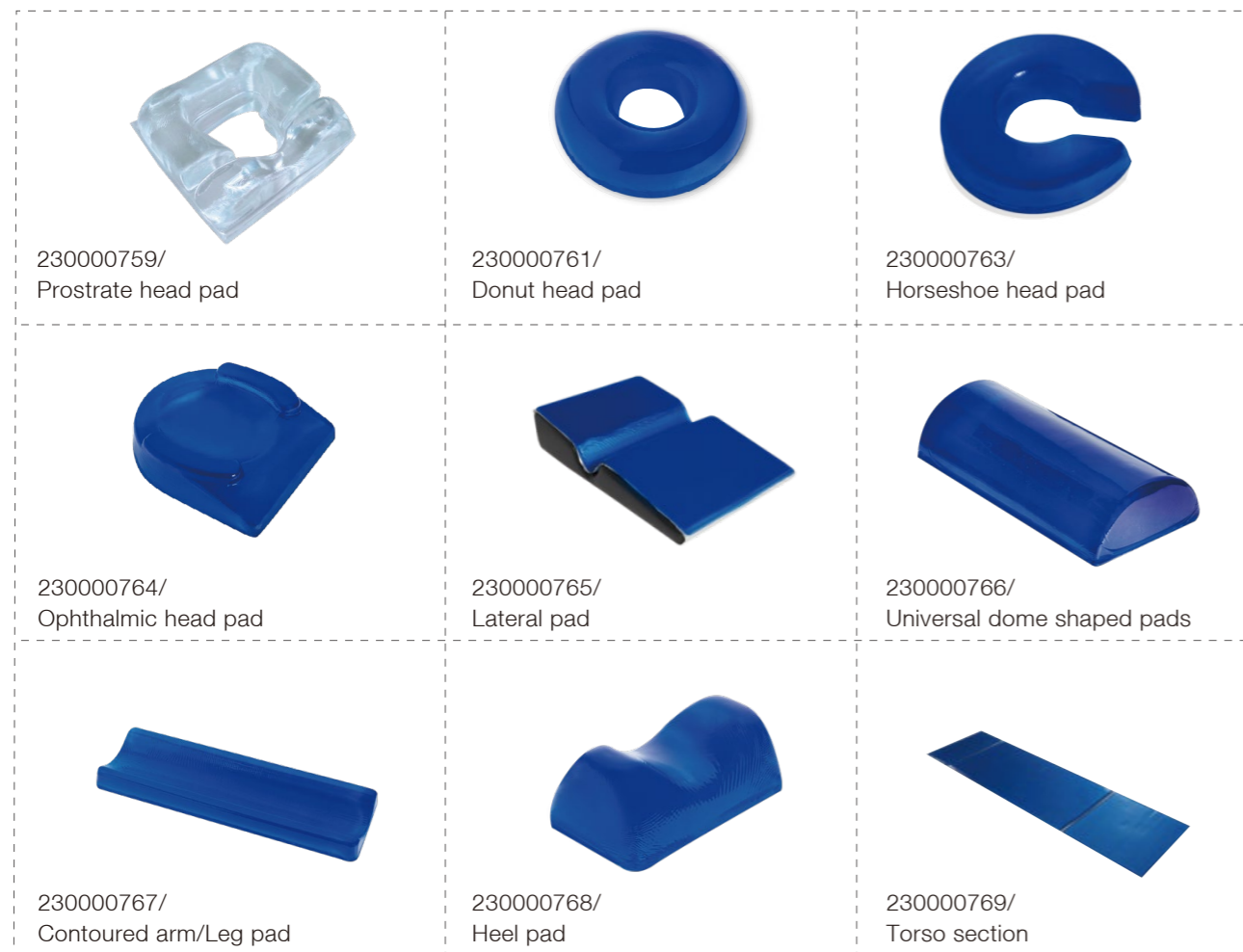
**Standard Accessories**



**Gel Pad**

**Functions & Features:**

The gel pad which made from viscoelastic polymer gel, offers stability and comfort during positioning. It has uniform dispersion of pressure which can avoid bed sore. It is easy to clean and X-ray translucent. It can support surgery with working environment temperature from -10oC to 50oC. It is also biocompatible with human skin and tissues. All these features make the gel pads cost-effective and durable.



**Surgery Positions:**



**Chest/Abdominal Surgery**

Recommended accessories:

- 230000760 Donut head gel pad x1
- 230000769 Torso section gel pad x1
- 121000347 Foot plate 1 pair x 1
- 121000348 Notched clamp x 2
- 121000294 Arm rest x 2



**E.N.T Surgery**

Recommended accessories:

- 230000760 Donut head gel pad x1



**Urology/OB/Gynecology Procedures Surgery**

Recommended accessories:

- 230000760 Donut head gel pad x1
- 230000769 Torso section gel pad x1
- 121000295 Knee crutch x 2
- 121000357 Drainage bowl x 1
- 121000294 Arm rest x 2



**Spinal Surgery**

Recommended accessories:

- 230000759 Prostrate head gel pad x 1
- 121000356 Intervertebral pad x 1
- 121000294 Arm rest x 2
- 230000769 Torso section gel pad x1
- 230000766 Universal dome shaped pad x1



**Shoulder Operation**

Recommended accessories:

- 121000294 Arm rest x 2
- 121000350 Head rest x 1
- 121000351 Connection bracket x 1



**Neurosurgery**

Recommended accessories:

- 121000294 Arm rest x 2
- 121000350 Head rest x 1
- 121000351 Connection bracket x 1
- 230000769 Torso section gel pad x1
- 230000766 Universal dome shaped pad x1